

FIRE RATED ACCESS PANEL

TECH SHEET: PANEL-06

Issue: 08-09-06

Lift motor room hatch / floor access panel

Screw fixed or hinged floor access panel with checker plate cover and 4 sided steel frame

DESCRIPTION

Specifically designed for lift motor room and plant room hatches, these units are manufactured to size and incorporate a steel checker plate cover, and a special four sided pressed metal frame which is suitable for casting into concrete floors.

APPLICATIONS

Lift shafts, motor rooms, plant rooms, or any application that requires access through a fire rated concrete floor.

FEATURES

- Anodised aluminium or steel channel edges to four edges
- Ply or steel faced
- 48mm thick
- Screw fixed, masonry anchors or hinged
- Recessed finger grips provided
- Finger holes provide in checker plate steel cover
- NOTE: panels are non structural and must not have any load directly applied - steel checker plate is mandatory where there is any risk of load (including people) being applied
- Integrated hot smoke / fire seals included
- Medium temperature smoke seals available
- Singles or pairs with removable mullion
- Deletion of checker plate will reduce insulation value to 60 minutes

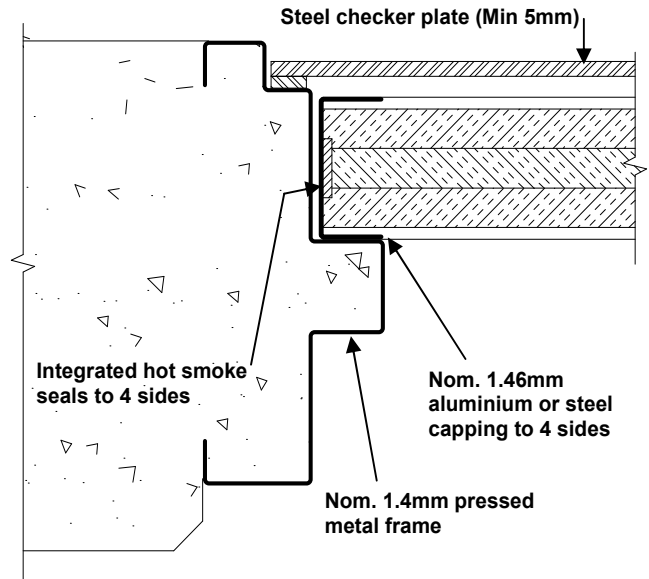
MODELS

Model	FRL	Thick-ness	Max size single panel	Max size per panel for pairs
PFAP-240/120	-/240/120	48	1700 x 500	N/A
PFAP-120/120	-/120/120	48	1275 x 850	1275 x 850

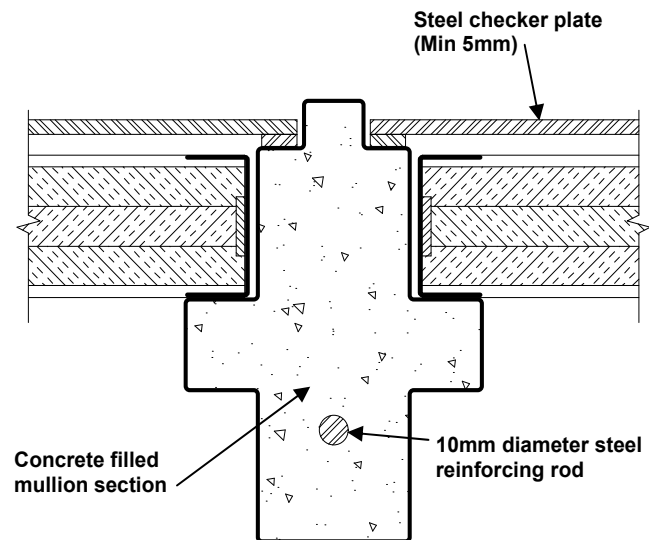
HOW TO SPECIFY

"Eg. Access panel to be a Pyropanel fire rated floor access panel PFAP-240/120, FRL -/240/120, Ply face*, with a hinges / screw fixings*.

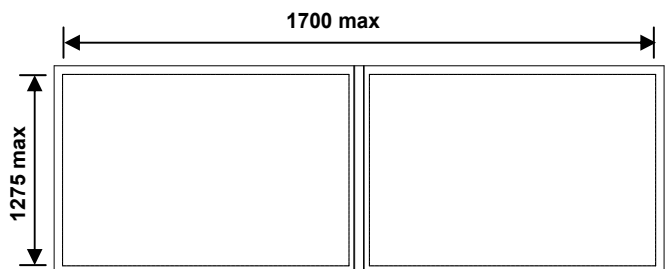
* denotes example - delete, change or specify as required.



Elevation of edge detail



Elevation of removable mullion detail



Plan view of pair floor panel with removable mullion



Pyropanel Developments Pty Ltd
 122-124 Beresford Rd, Lilydale, VIC, 3140
 Ph: (03) 9739 3100 Fax: (03) 9739 3115
 Email: sales@pyropanel.com.au
 Web: www.pyropanel.com.au

Distributed by:



Australian Commercial Doors Pty Ltd
 P: 03 9720 5766
 F: 03 9720 5388
 sales@acddoors.com.au