

# ACCESSORIES

## Fire rated vision panel

### DESCRIPTION

Vision panels utilising Pilkington Pyrodur™, or Pyroceram glass for up to 4 hours of fire rating.

### APPLICATIONS

Fire doors located in car parks, factories schools, hospitals, or wherever there is a need to see through a fire door.

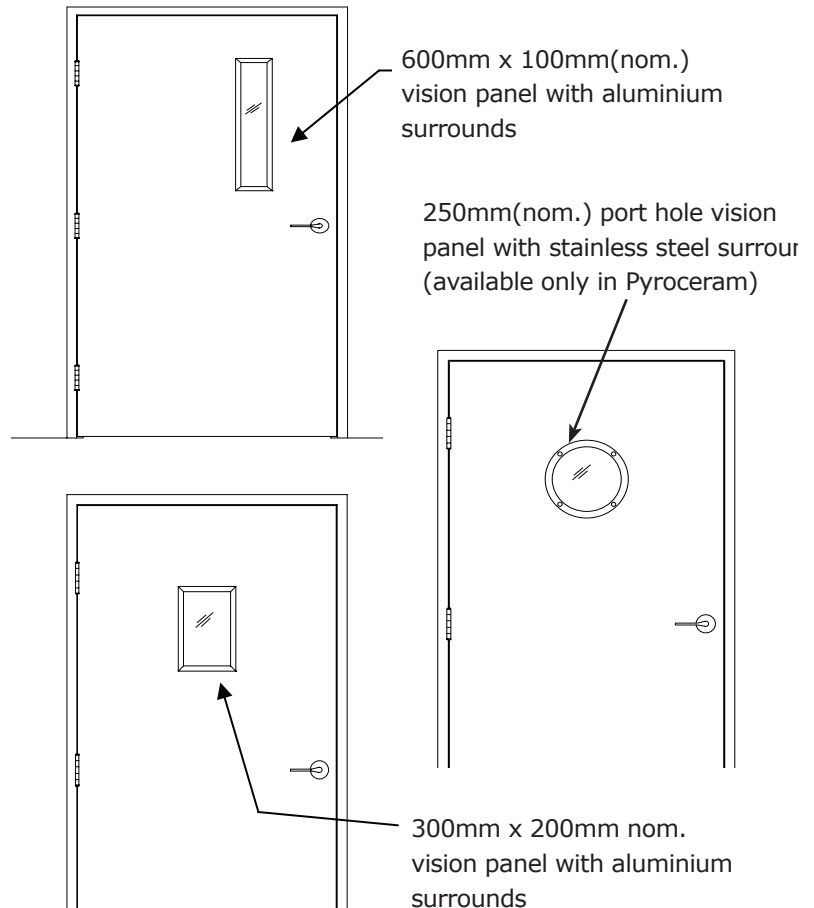
*Note: Australian Standards 1530.4 and 1905.1 limit visible area for glass that has an insulation value less than 30 minutes to a maximum area 65,000mm<sup>2</sup>, when used in fire doors.*

### FEATURES

- All options fully certified to Australian Standards
- Standard sizes:
  - 300 x 200mm (nom.),
  - 600 x 100mm (nom.)
  - 250 (nom.) diameter porthole
- 13mm Pilkington Pyrodur glass
  - Perfectly clear glass
  - Up to 2 hr fire rating
  - Maximum 65,000mm<sup>2</sup> visible
  - Acoustically rated up to 38RW
- 5mm Pyroceram ceramic glass
  - Slightly bronze colour in appearance
  - Up to 4 hr fire rated
  - Maximum 65,000mm<sup>2</sup> visible

### OPTIONAL EXTRAS

- Custom sizes available
- For vision panels greater than 65,000mm<sup>2</sup> visible area, please refer to "Glass fire doors" within the Fire Door section



### HOW TO SPECIFY

*Eg, "Door to have 600 x 100mm (nom)\* Pyropanel PVP-Pyrodur\*vision panel including anodised aluminium surrounds..."*

\* denotes example - delete or change or specify as required

Model	Maximum fire rating	Glass	Light transmission	Thickness			Acoustic rating (RW)	Maximum Visible area
PVP-Pyrodur	2hr	Pyrodur™	85%	13mm			38	65,000mm <sup>2</sup>
PVP-Pyroceram	4hr	Pyroceram™	65% (approx)	5mm				65,000mm <sup>2</sup>

**Pyropanel Developments Pty Ltd**  
 Unit 1, 97 Lewis Rd, Wantirna South, Vic 3152  
 Ph: (03) 9837 8500 Fax: (03) 9837 8550  
 Email: [sales@pyropanel.com.au](mailto:sales@pyropanel.com.au)  
 Web: [www.pyropanel.com.au](http://www.pyropanel.com.au)

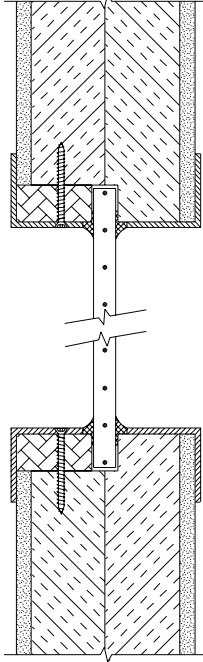


**Distributed by:**  
**Australian Commercial Doors**  
 P: (03) 9720 5766  
 F: (03) 9720 5388  
 E: [sales@acdoors.com.au](mailto:sales@acdoors.com.au)

# ACCESSORIES

## Fire rated vision panel

### TYPICAL SECTIONS



**6mm Georgian wired glass  
vision panel (1 hr)**

**Pyropanel Developments Pty Ltd**  
Unit 1, 97 Lewis Rd, Wantirna South, Vic 3152  
Ph: **(03) 9837 8500** Fax: (03) 9837 8550  
Email: [sales@pyropanel.com.au](mailto:sales@pyropanel.com.au)  
Web: [www.pyropanel.com.au](http://www.pyropanel.com.au)



**Distributed by:**  
**Australian Commercial Doors**  
P: **(03) 9720 5766**  
F: **(03) 9720 5388**  
E: [sales@acdoors.com.au](mailto:sales@acdoors.com.au)