

# BULLET RESISTANT DOORS

**TECH SHEET:** SP-BR01

Issue: 03-08-12

## Special Purpose Bullet Resistant Doorsets

Range of bullet resistant doorsets that have been tested to Australian Standards for a variety of resistance classifications

### DESCRIPTION

Pyropanel Bullet Resistant doorsets are tested to Australian Standards, and are available in a range of models to suite all applications. They have a nominal thickness of 50-55mm, and are supplied with 2mm metal door frames, factory fitted ball bearing 100mm x 100mm butt hinges (4qty), or continuous piano hinges. All locksets and door hardware are required to be factory fitted to ensure no loss of integrity.

### APPLICATIONS

Pyropanel Bullet Resistant doorsets are suitable for a wide range of applications such as banks, embassies, prisons, cash rooms, apartment entry doors, etc.

### FEATURES

- Wide range of models covering AS classifications of G0, G1, G2, R1, R2, S0, and S1, as well as the AK47 urban assault rifle.
- Fire Resistant construction available up to -/120/30.
- Smoke and sound resistant (with seals).
- Bullet resistant vision panels utilising LEXGUARD laminate glass.
- Finishes include Zinc, Galvanised, Stainless Steel, Laminate, Ply or MDF.

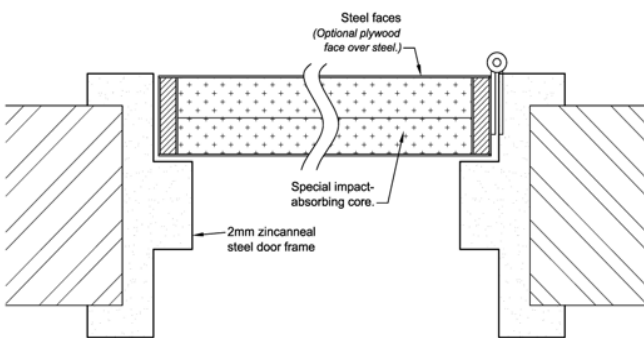


Illustration of typical doorset with frame solidly grouted into masonry wall. Special bullet resistant frames can be designed for stud wall applications

### CLASSIFICATION TABLE

#### (AS/NZS 2343:1997)

Class	Weapon Type	Calibre	Ammunition	Range
G0	Hand Gun	9mm	7.4g standard bullet	3m +/- 10mm
G1	Hand Gun	.357 Magnum	10.2g flat nose bullet	3m +/- 10mm
G2	Hand Gun	.44 Magnum	15.6g flat nose bullet	3m +/- 10mm
R1	Rifle	5.56mm	3.6g bullet	10m +/- 20mm
R2	Rifle	7.62mm	9.3g bullet	10m +/- 20mm
S0	Shotgun	12 gauge full choke	32g 70mm no.6 SG shot	3m +/- 10mm
S1	Shotgun	12 gauge full choke	24.8g 70mm single slug	3m +/- 10mm
AK-47	Urban Assault rifle	7.62mm	8.3g jacketed bullet	10m +/- 20mm

### MODELS AVAILABLE

Model	Bullet Resistance	Fire resistance (fire rated construction)
BR-A	G0, G1, G2, S0, S1	Up to -/120/30
BR-B	R1, G0, G1, G2, S0, S1	Up to -/120/30
BR-C	R2, G0, G1, G2, S0, S1, AK-47	Up to -/120/30

### HOW TO SPECIFY

*"Door to be a Pyropanel Bullet resistant doorset, 50-55mm mm thick, -/120/30 Fire rated construction\*, with steel facing installed in a Pyropanel pressed metal door frame solidly packed with concrete"*

\* denotes example—delete or change or specify as required



**Pyropanel Developments** Pty Ltd  
 Unit 1, 97 Lewis Rd, Wantirna South, Vic-3152  
 Ph: (03) 9837 8500 Fax: (03) 9837 8550  
 Email: sales@pyropanel.com.au  
 Web: www.pyropanel.com.au

**Distributed by:**



**Australian Commercial Doors Pty Ltd**  
 P: 03 9720 5766  
 F: 03 9720 5388  
 sales@acdoors.com.au