

BUILDING IN DETAILS

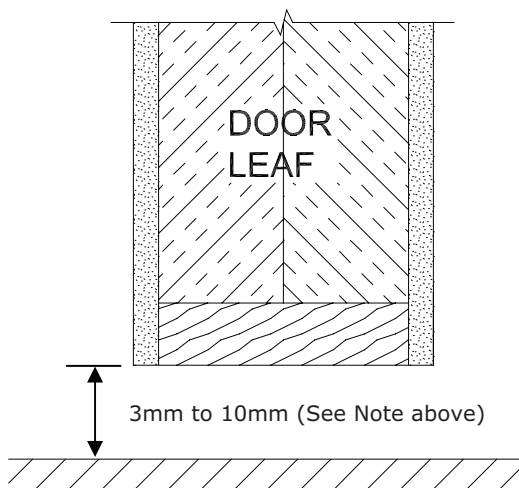
Gaps around fire doors

DESCRIPTION

Fire doors must be installed to AS1905.1 or as per tested or assessed, which includes the allowable gaps around the stiles, head and base of the door. The following technical sheet describes the maximum allowable gaps and acceptable rectification methods.

ACCEPTABLE CLEARANCES

- **Stiles and head:**
 - In the closed position, gaps between the door and frame jamb (head, hinge and lock stiles) are not to exceed 3mm
 - Door leaf to the door seat rebate to not exceed 5mm average
- **Bottom:**
 - Maximum allowable gap between leaf and top of finished floor level is 10mm (3-10mm is recommended) (Note: Up to 15mm gap is approved on some doors, contact licensed distributor to confirm.)



RECTIFICATION OF EXCESS GAPS

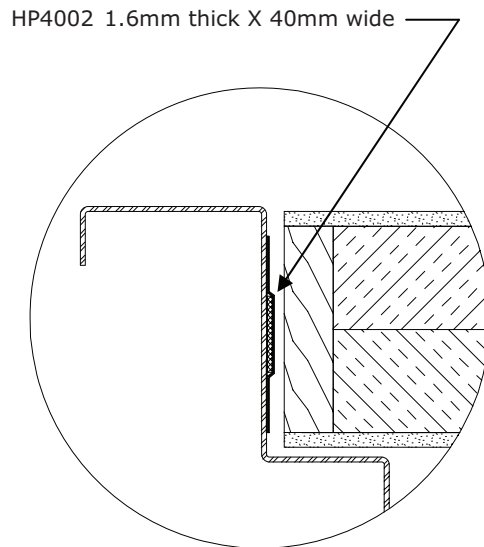
Stiles and head:

Gaps between door leaf and frame can be reduced by using the following methods:

- Lorient HP4002 stick on perimeter seal attached to door frame or door leaf

Lorient HP4002:

- Can be used where there are excessive stile or head gaps.
- Can be used on each stile of door leaf
- Integrated self adhesive tape is used to apply seal to door rebate.



BUILDING IN DETAILS

Gaps around fire doors

RECTIFICATION OF EXCESS GAPS

Bottom:

Gaps of up to 20mm at the bottom of the door can be reduced by using the following methods:

(**Note:** The following methods are approved up to 2hr fire rating, Contact Pyropanel Distributor for more info)

ACCEPTABLE CLEARANCES

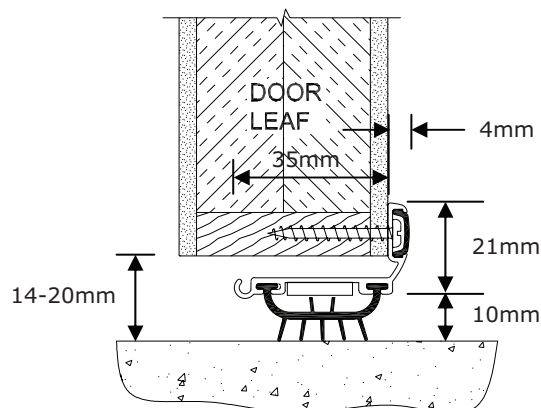
- **Lorient FDBU20** can be used for up to 20mm gap
- **Raven RP114** can be used for up to 20mm gaps
- **Pyropanel Greenboard** can be used to reduce gaps by 10mm
- **Non combustible threshold seals** can be used to reduce the gap under a fire door:
 - Raven RP28, RP29 RP77, RP82, RP95 (gaskets must be removed), Lorient IS4070, IS4075, IS4010, IS4015, IS4020, IS4025, IS4110, IS4120

Raven RP114:

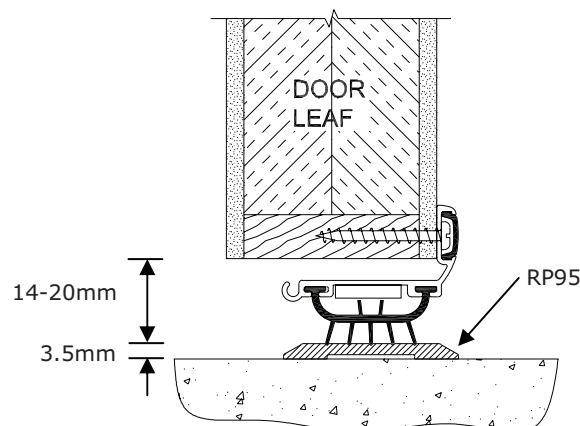
Raven RP114 should just clear the floor during door opening and closing. To avoid the seal fouling on uneven or sloping surfaces the finned gasket portion should engage an approved Raven threshold plate

ACCEPTABLE CLEARANCES

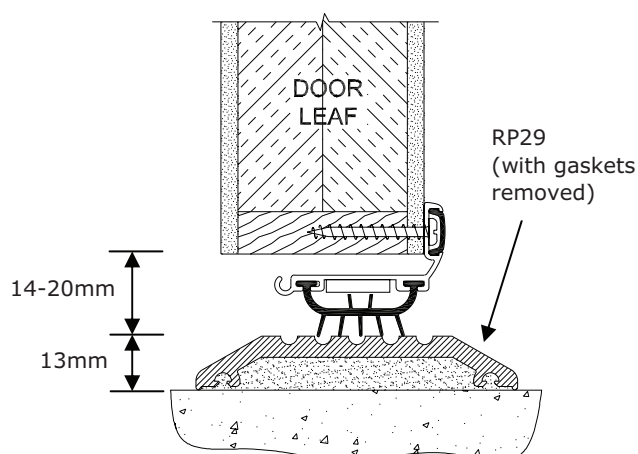
- **Location:** Bottom of Fire and smoke doors
- **Min/Max Gap:** 14mm to 20mm (without Raven threshold plate)
- **Seal Sizes:** Available 820mm, 915mm, 1220mm
- **Standard Finish:** Anodised Satin Clear or Bronze.
- **Fixing method:** Simply cut seal to length. Zinc plated cross recess head ST screws of the appropriate size are supplied
- **Seal Material:** Intumescent infill, S.E. flexible PVC cover strip and finned gasket
- **Used in conjunction with** approved Raven door frame seals and threshold plates.



Raven RP114 installed on a 48mm fire door



Raven RP114 installed on a 48mm fire door with additional Raven RP95 threshold seal



Raven RP114 installed on a 48mm fire door with additional Raven RP29 threshold seal

Pyropanel Developments Pty Ltd

235 Huntingdale Rd, Oakleigh, Vic 3166

Ph: (03) 9837 8500 Fax: (03) 9837 8550

Email: sales@pyropanel.com.au

Web: www.pyropanel.com.au



Distributed by:

Australian Commercial Doors

P: (03) 9720 5766

F: (03) 9720 5388

E: sales@acddoors.com.au

Pyropanel Developments has a policy of continuous improvement and reserves the right to change methods and specifications without notice.

Note: The Tech Sheet is an uncontrolled document, If printed please refer to the Tech-Sheet on the website to check if this document is valid.

BUILDING IN DETAILS

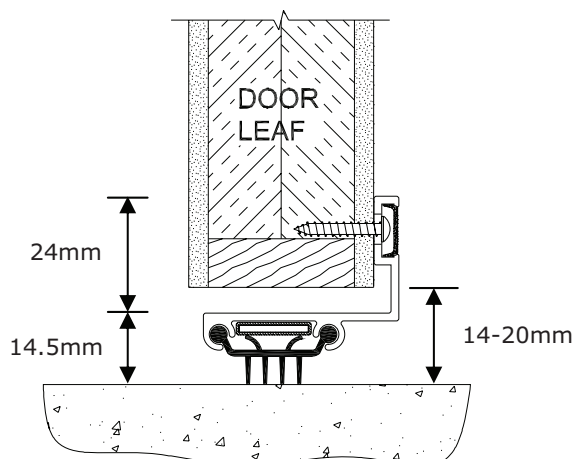
Gaps around fire doors

Rectification of bottom gaps con't.

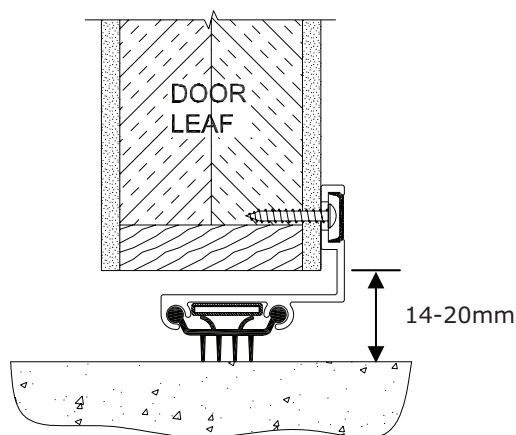
Lorient FDBU20:

Lorient FDBU20 can be used to upgrade existing internal fire doors where door bottom gaps exceed the allowable 10mm as per AS/NZS1905.1. It is constructed from anodised aluminium profile, and incorporates a flame retardant smoke, draught and light excluding gasket, and integral high performance intumescent fire seal.

- **Location:** Bottom of Fire and smoke doors.
- **Min/Max Gap:** 14mm to 20mm
- **Seal Sizes:** 820mm, 915mm, 1220mm.
- **Standard Finish:** Anodised aluminium.
- **Fixing method:** cut seal to length and attached with screws
- **Used in conjunction with** approved Lorient door frame seals and threshold plates.



Lorient FDBU20 installed on a 38mm fire door



Lorient FDBU20 installed on a 48mm fire door

Raven Seals

Seal	Product Code	Finish	Length (mm)
RP114	OEM114C820	Clear Anodised	820
	OEM114B820	Bronze Anodised	820

	OEM114C915	Clear Anodised	915
	OEM114B915	Bronze Anodised	915

	OEM114C1220	Clear Anodised	1220
	OEM114B1220	Bronze Anodised	1220

Lorient Seals

Seal	Product Code	Door Thickness	Std Colour	Length (mm)
FDBU20	FDBU20-820-CA	35 - 48	Silver	820
	FDBU20-920-CA	35 - 48	Silver	920
	FDBU20-1220-CA	35 - 48	Silver	1220

HP4002	HP4002-1000	35 - 48	White, Grey*	1000
	HP4002-2100	35 - 48	White, Grey*	2100
	HP4002-2400	35 - 48	White, Grey*	2400
	HP4002-3000	35 - 48	White, Grey*	3000

Notes:

HP4002 may be painted over
 Other colours available on special order