

FRAME PROFILES

Upgrading non fire rated door frames

TECH SHEET: FRAME-06

Issue: 03-08-2010

Allowable methods for upgrading non-fire rated steel door frames to suit Pyropanel fire doors

DESCRIPTION

Allowable methods for upgrading non fire rated steel door frames to suit Pyropanel fire rated doorsets.

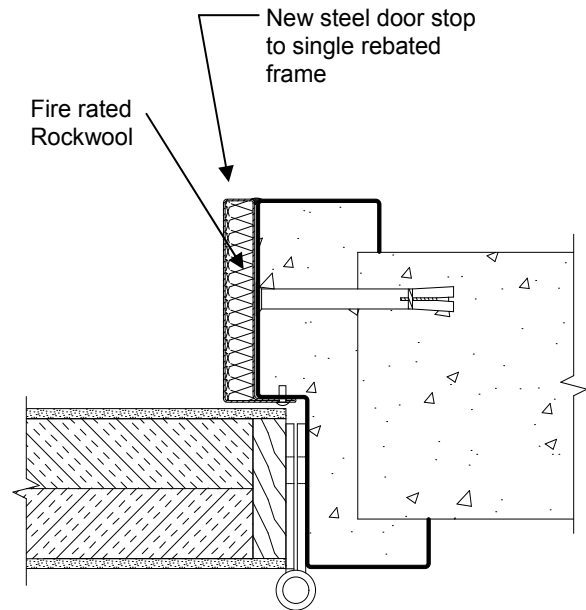
APPLICATIONS

Ideal for most applications that require a certified fire doorset but which have a non rated door frame with a door stop less than 25mm.

ALLOWABLE METHOD

Door stops

- Existing door frame thickness must be at least 1.1mm.
- Form up steel channel to increase door stop to at least 25mm thick.
- Pack new door stop with fire rated rockwool.
- Mechanically fix new door stop by using either steel rivets or steel countersunk screws at 300mm centres, or by welding.



Single rebated frame