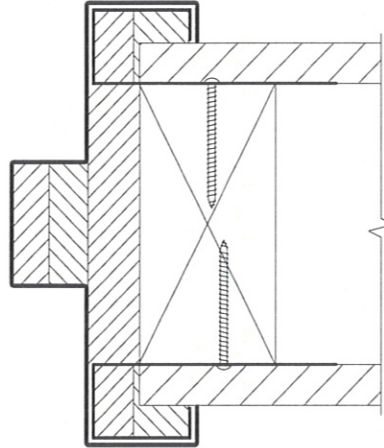


DESCRIPTION

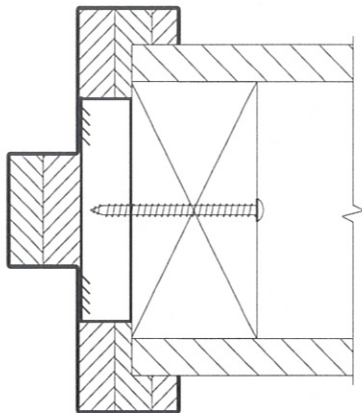
Building in details showing the approved fixing methods for gyprock walls up to 2 hours of fire rating.

REQUIREMENTS

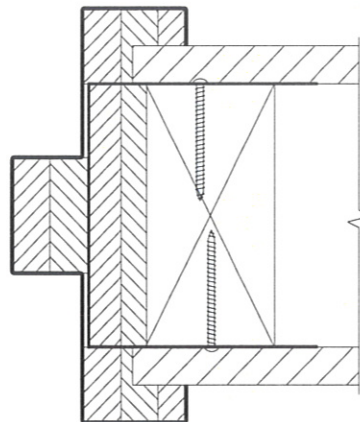
- Backfilling with fire rated gyprock or rockwool is highly recommended, but not required up to 2 hour FRL. All acoustic warranties and approvals are void for unpacked frames.
- Ensure all gaps are tightly filled with Pyropanel Multiflex fire rated acrylic sealant.
- Fixings to be at max. 500mm centres



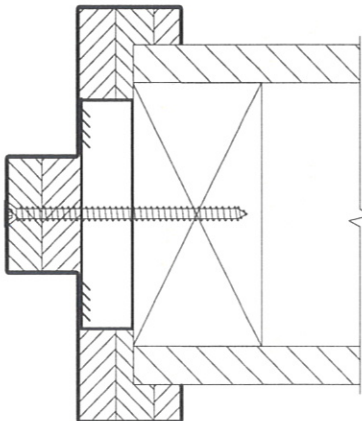
Stud Bracket



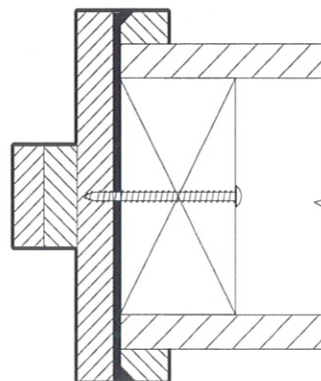
MS tube or saddle bracket



C-Section



MS tube or saddle bracket



Steel strap

BUILDING IN DETAILS

Masonry, brick, aerated brick walls

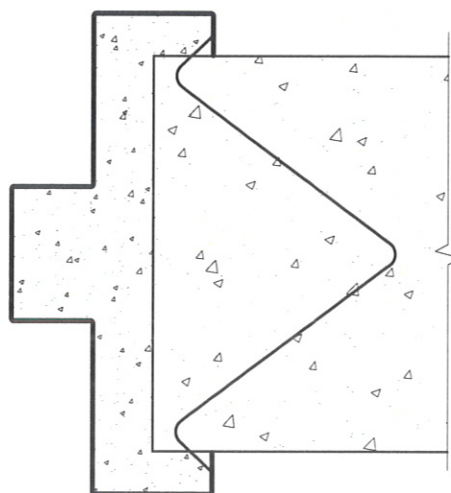
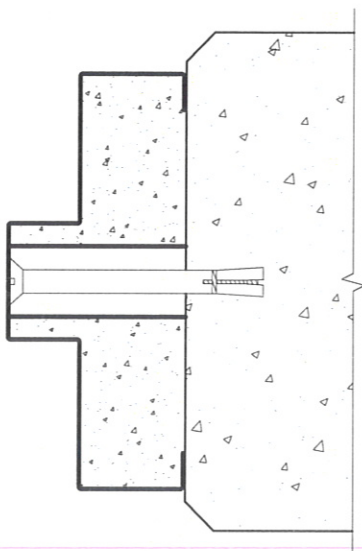
TECH SHEET: BUILD-02

Issue: 07-06-2010

Allowable building in details for
masonry (concrete, brick, etc) walls

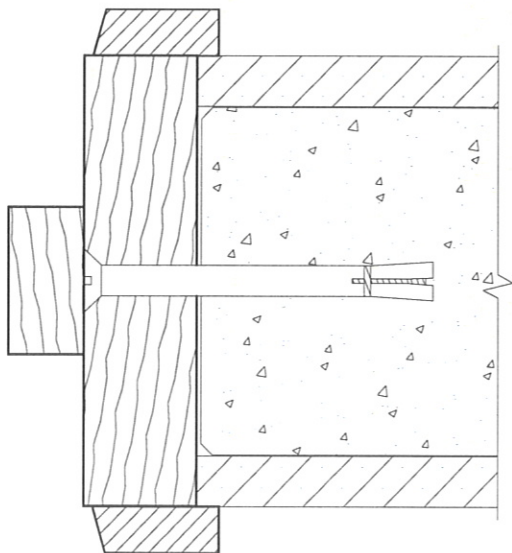
DESCRIPTION

Building in details showing the approved fixing methods for masonry walls, including concrete, brick, aerated lightweight brick (Hebel®) walls for up to 4 hours of fire rating.

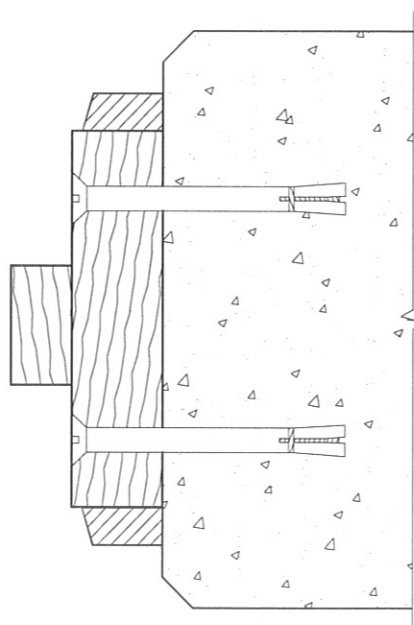


Wire ties for block wall or cast into concrete panel wall (up to 4 hours)

Steel frame with Dynabolt fixings at typically 400mm centres (up to 4 hours)



Timber frame - single row of concealed dynabolts at typically 400mm centres (optional rebate for plaster wall lining shown) (Up to 1 hour)



Optional fixing for timber frame with two rows of dynabolts at typically 400mm centres. Also approved for fixing steel

BUILDING IN DETAILS

Masonry, brick, aerated brick walls

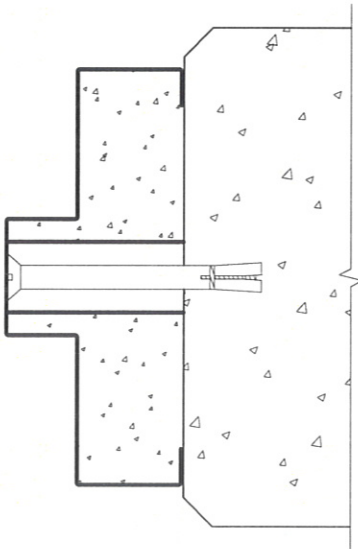
TECH SHEET: BUILD-02

Issue: 07-06-2010

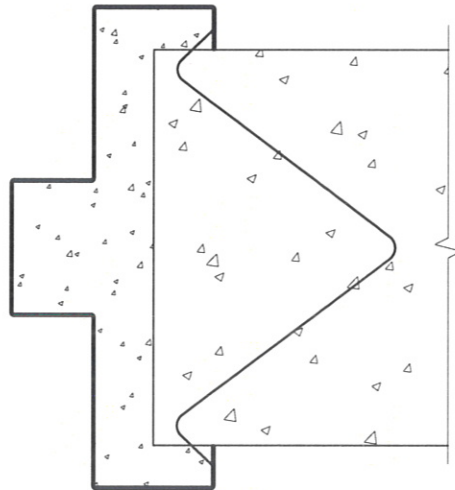
Allowable building in details for masonry (concrete, brick, etc) walls

DESCRIPTION

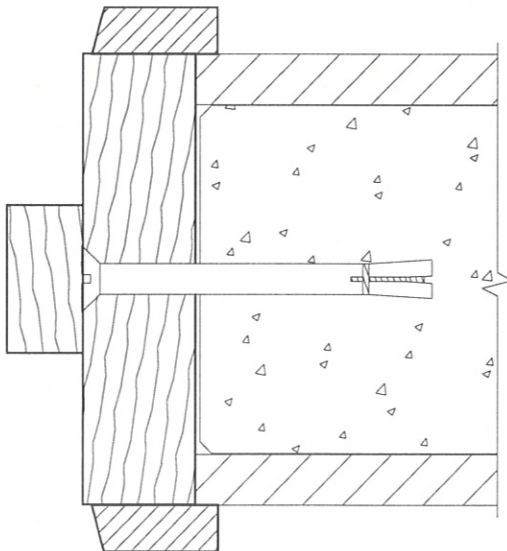
Building in details showing the approved fixing methods for masonry walls, including concrete, brick, aerated lightweight brick (Hebel®) walls for up to 4 hours of fire rating.



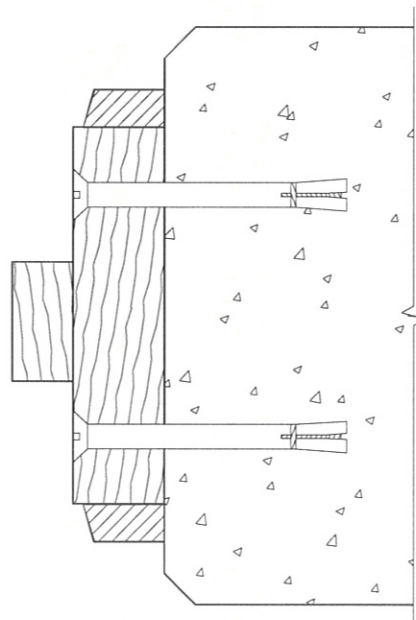
Steel frame with Dynabolt fixings at typically 400mm centres (up to 4 hours)



Wire ties for block wall or cast into concrete panel wall (up to 4 hours)



Timber frame - single row of concealed dynabolts at typically 400mm centres (optional rebate for plaster wall lining shown) (Up to 1 hour)



Optional fixing for timber frame with two rows of dynabolts at typically 400mm centres. Also approved for fixing steel